



July, 2021

## Help set our Climate Change priorities

Strathbogie Shire residents are being invited to help set mitigation, adaptation and resilience actions to address Climate Change by attending a public forum on July 15. The forum is the next step in Strathbogie Shire Council's work to address the impacts of Climate Change.

Council recently became the 100th Council in Australia to declare a Climate Emergency and just the third to pass this Notice of Motion unanimously.

Mayor, Cr Chris Raeburn, said a panel of climate experts had been assembled to share their expertise. "We've got panelists coming who will share their expertise and knowledge, along with information about work they're doing and provide our community with the opportunity to ask questions," Cr Raeburn said. "We'll also use this forum as an opportunity to work with our community to start prioritising and setting our mitigation actions as we work with you to develop a Climate Change Action Plan."

Panellists include:

- Professor Kate Auty. EPA chair, former Victorian Commissioner for Environmental Sustainability and ACT Commissioner for Sustainability and the Environment
- Cr Jenny O'Connor. Mayor – Indigo Council
- Bronwyn Chapman. Executive Officer Goulburn Murray Climate Alliance
- Cr Sally Hayes-Burke. Councillor Strathbogie Shire Council
- Cam Klose. Campaign Director – Farmers for Climate Action

The forum will be independently facilitated by Indigo Power Chair Ann Telford – to ensure everyone has an opportunity to share their views, ask questions and help us prioritise our Climate Change actions.

The forum is being held on Thursday, July 15 from 6pm to 8pm at the Longwood Community Centre.

To meet coronavirus restrictions the public will need to register attendance by visiting:

<https://www.trybooking.com/BSDFR> or  
[www.share.strathbogie.vic.gov.au](http://www.share.strathbogie.vic.gov.au).

For further information:

Kristin Favaloro  
Executive Manager Communications and Engagement  
E: [Kristin.favaloro@strathbogie.vic.gov.au](mailto:Kristin.favaloro@strathbogie.vic.gov.au)  
P: 0438 670 762



## What's On

**Please check with organisers regarding current covid-19 arrangements.**

**Every Third Monday** of the month  
7.30pm STAG meets at Strathbogie Hall. Helen Peters, Secretary.

**Every Second Tuesday** of the month - Strathbogie Memorial Hall Committee meets 6pm in the Hall.  
Enq Mary Wynne 0419 592 211

**Every Wednesday** - Material Girls - usual times 10am - Rec Ground - BYO lunch. Newcomers welcome  
Ph: Jill Smith 5790 5159.

**Every Wednesday** - 7.30pm  
Strathbogie Singing Group -  
St Andrews Church  
Ph: Di Mackrell 5790 5241

**Every First Sunday** of the month -  
Strathbogie Landcare 9-11am  
Contact Sean 0400 019 607

**Every Second and Fourth Sunday**  
- Church service at St Andrews Church - Strathbogie 11.00am

**Every First Wednesday** of the month - 1.30pm Strathbogie Garden Group. Contact Wendy 5790 8523

**Every Fourth Saturday** of the month - Australian Plants Society Group meeting  
Pete 0402 882 959

**Every Third Sunday** of the month  
- 4pm Strathbogie Community of Food Finders at the Recreation Ground

**Every Thursday** - 5pm. Tennis at the Recreation Reserve. All welcome. Secretary Mayra Walsh

## Swanpool CINEMA

**Antoinette in the Cevennes** M Sat  
Jul 3 6pm, Sun Jul 4 5pm

**The Translators** M Sat Jul 3  
8.15pm, Sun Jul 4 7.15pm

**Swanpool Environmental Film  
Festival** Sat Oct 23 1pm.

**Tickets \$13.50/\$11 Covid-19  
restrictions apply.**

[www.swanpoolcinema.com.au](http://www.swanpoolcinema.com.au),  
[trybooking.com](http://trybooking.com)

### Do you need a Justice of the Peace?

Chris Thomson  
'Aberdeen'  
5790 5340

**Boho South Hall**  
Available for hire.  
Bookings contact:  
Margaret Mactier  
Ph 0458 328 873

### Got something to say?

Send us a

**Letter to the Editor**

## Euroa Cinema

**Another round** M Fri Jul 2 8pm, Sat Jul 3  
4pm

**Promising Young Women** MA+ Sat Jul 3  
8pm, Sun Jul 4 4pm

**Gulpilil** M Tues Jul 6 11.30am, Fri Jul 9 8pm  
**Cranston Academy** PG Wed Jul 7 11am,  
Wed Jul 7 3pm

**Moon Rock for Monday** M Sat Jul 10,  
7.30pm, Sun Jul 11 4pm

**Six minutes to midnight** M Sat Jul 17 8pm,  
Sun Jul 18 4pm

**Dream Horse** PG Sat Jul 24 8pm, Sun Jul 25  
4pm

**The Last Vermeer** M Sat Jul 31 8pm, Sun  
Aug 1 4pm

Tix at door, [trybooking.com](http://trybooking.com) or Customer  
Service 5795 0000. **Prebooked \$8.**  
Covid-19 restrictions apply

For information regarding the Violet  
Town Village Voice or to get an  
emailed copy each month contact  
Abbey Ferguson at  
[villagevoice@violettown.org.au](mailto:villagevoice@violettown.org.au)  
online at [www.violettown.org.au](http://www.violettown.org.au)

### Support Strathbogie Landcare agricultural & conservation projects

Membership is \$10 per household.  
This gives you access to Landcare  
magazine, subsidised seedling  
purchases and community projects.  
Simply deposit \$10 into the Strathbogie  
Tableland Landcare account:  
BSB 803 078  
Acc 100081991 with your name as  
reference or contact Secretary Sean  
Mathews for a membership form  
[snmthws@bigpond.com](mailto:snmthws@bigpond.com)

### **Check YOUR Local Event Doesn't Clash With ANOTHER Local Event.**

Do you want to get the most  
people to your planned local  
event? Is your local event going  
to clash with another local event?

Ask Tableland Talk. Many local  
events are promoted through our  
local Newsletter.

If you want to find out if another  
event is being promoted on a  
date you are planning for, get in  
touch.

We will tell you if another local  
event has already been promoted  
on the same day /time:

[tablelandtalk@gmail.com](mailto:tablelandtalk@gmail.com)  
m: 0400 019 607

### **Shire Healthy Ageing Newsletter**

Free hard copies available at  
participating supermarkets, POs,  
libraries, pharmacies, medical  
centres, community houses and op-  
shops or via [https://  
www.strathbogie.vic.gov.au/  
community/seniors-active-ageing](https://www.strathbogie.vic.gov.au/community/seniors-active-ageing)

### **Tableland Talk is a community newsletter run by a volunteer group.**

This newsletter is entirely made up  
of contributions. Contributions to  
this newsletter are published as a  
forum for public discussion.

The opinions expressed are the  
opinions of the contributors and  
not necessarily the opinions of the  
TT Team. By publishing  
contributions this newsletter does  
not give its authority to the truth or  
validity of the material contained in  
contributions.

Readers are reminded that all  
contributions **MUST** be submitted  
with the name and address of the  
writer.

We would appreciate it if all  
invoices for advertising are paid in  
full, and promptly - we have to pay  
to publish.

*The TT Team*

## Mobile Library

### **Dates for Strathbogie:**

July 10 and 24  
10.00 - 12 noon

**Every 2nd Saturday**



### **Strathbogie Memorial Hall**

Available for hire— \$150 with \$250  
refundable deposit in case carpet  
cleaning is required.  
Bookings contact person is Mary Wynne  
Ph 0419 592 211

### **Strathbogie Recreation Ground**

All bookings are to  
be made with  
Kim Usher  
5790 5345

**The Deadline** for the August edition of Tableland Talk is Tuesday, July 27, 2021.

Editor: Sean Mathews E: [tablelandtalk@gmail.com](mailto:tablelandtalk@gmail.com) M: 0400 019 607 or via Strathbogie PO / Store.  
Preferred formats: Word or Publisher files, font Arial 11, convert pdf to jpeg, images <250k. *TT Team.*



## Works to progress at Spring Creek Picnic Area



Plans to ensure safe access to the Spring Creek Picnic Area have now been finalised by Strathbogrie Shire Council.

The plan will continue the shared access to the Old Saleyards property on the Euroa-Strathbogrie Rd and the Spring Creek Picnic Area.

Works will include safety measures to slow traffic through natural rock bollards and vegetation, improved stormwater run-off works, stabilising the shelter and creating a car parking area.

The location of the new access was also the most cost-effective option, ensuring that Strathbogrie Shire Council was making safety a priority and spending ratepayer's money in the most efficient way. We thank the community for its input into this important project.



Kristin Favaloro  
Executive Manager Communications and Engagement  
Strathbogrie Shire Council

P: 03 5795 0028 | M: 0438 670 762 | F: 03 5795 3550 | Toll Free: 1800 065 993

## New Strathbogrie Tableland Linear Roadside Research Project Announced

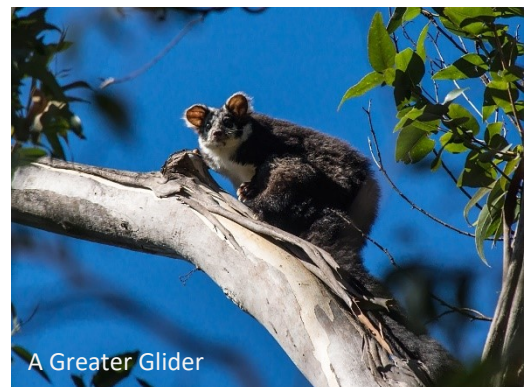
My name is Claire Tingate and I am an Environmental Honours student at Deakin University. Between July and August, I will be conducting field work for my project in the roadside vegetation throughout the Strathbogrie Ranges. You might see me around from time to time over the next few months, and I will be wearing reflective gear when I'm out on the roads at night.

My research project is assessing the value of linear roadside vegetation for the threatened Greater Glider and other arboreal mammals, including koalas, brush-tailed possums, bobucks, Krefft's (formally sugar gliders) gliders, ring-tailed possums, brush-tailed phascogales, and feather-tailed gliders, in North-eastern Victoria (Strathbogrie Ranges). I will be conducting spotlight surveys at night, and habitat assessments to determine the distribution and relative abundance of arboreal mammals in this area and examine what environmental factors influence this.

[etingate@deakin.edu.au](mailto:etingate@deakin.edu.au)

0434588361

Claire Tingate



A Greater Glider

## Quiz Question of the Month

Barry Humphreys' most famous character first appeared in "Return Fare", a 1955 Christmas Review produced by the Union Theatre Company. What was the character's name?

Answer page 6



## Disaster dilemma

by Donmil

Hindenburg or Titanic?

A difficult choice;

But one even harder:

McCormack or Joyce?

# A AERIAL SERVICES

## Drone photos, videos and sales

Sales of DJI drones and spares at competitive prices

High resolution digital farm mapping

Property and real estate photography

Commercials and promotional videos

Asset and roof inspections

Call [0490 805 379](tel:0490805379) or email [alastair@ataerial.com](mailto:alastair@ataerial.com)

## Strathbogie Engineering

*For your Fabrication, Machining, Welding,  
Servicing and Repairs*

Stuart Watts  
62 Wonganookah Track,  
Marraweeney,  
03 5790 8668 or 0416 049 252  
E: Strathbogie. [Engineering@pobox.com](mailto:Engineering@pobox.com)

## Jackson's Produce Store

Cowslip Street, Violet Town

We are located in the main street of Violet Town and proudly stock our shelves with local produce and products, as well as fresh fruit and vegetables, gourmet cheese, biscuits, yoghurts, organics and superfoods, and lots more.

We also offer "Coomalong Estate" Oil re-fills and have recently commenced selling on order each week another great local product - "Milkwood Bread".

Open Wednesday - Friday 10am to 4pm and  
Saturday 10am to 1pm

Mobile: 0418773877 Email:  
[jacksonsvt@gmail.com](mailto:jacksonsvt@gmail.com)



Bottled Beer and Tastings available  
at the Violet Town Market

-----  
Or see our website for stockists  
Web: [www.strathbogiebrewing.com.au](http://www.strathbogiebrewing.com.au)  
Email: [info@strathbogiebrewing.com.au](mailto:info@strathbogiebrewing.com.au)  
Phone: 57905235 (Dave and Sandy)



ISA Brown  
Point of Lay Pullets  
Friendly, laying  
hens

Ideal for backyards  
\$24 each

Phone: Bec & Hugh

**57981868**

[www.croxmitch@gmail.com](mailto:www.croxmitch@gmail.com)



## The Bogie Tree

The Bogie Tree is our unofficial Strathbogie Tableland bush telegraph. It is an email list based on Google Groups and covers a fair percentage of the Tableland population and friends (both transient and permanent). Through this, we practice civil sharing of the following types of information:

- Lifts / rides / car shares
- Requests for assistance
- Offers of assistance
- Local job advertisements
- Lost / missing animals or people!
- Announcements of social activities / get-togethers
- Fire sightings / road washouts
- Any other thing you might want to contact other Tablelanders about
- Information on your local business or service

To learn more or join the Bogie Tree, please send an email to Johnno on [strathbogan@bigpond.com](mailto:strathbogan@bigpond.com) or call on 0439 818 366



**Advertising Rates** - Advertisements for revenue raising or business advertisements are charged per issue at \$7 ~ 1/6 page, \$12 ~ 1/4 page, \$15 ~ 1/2 page. Exact size and placement is at the discretion of the Editor. Rates are very reasonable. Free community event advertising is at no cost. Advertising solely funds this newsletter. For more information, email: [tablelandtalk@gmail.com](mailto:tablelandtalk@gmail.com) or phone 0400 019 607. Please support our advertisers.



## The Ground Storey Part 5 – Summary and Practical Actions

*(This is the fifth and final article drawn from a recent publication\* about the role of 'the ground storey' - fallen logs, branches, sticks and leaves - as habitat.)*

The following is a summary of the main points from the previous articles and some practical actions for preserving the ground storey on your property.

### Summary

**Nutrient recycling:** Invertebrates, fungi and bacteria live and work within fallen logs and the organic ground layer to ultimately return the 'captured' nutrients to the soil.

**Erosion:** The organic ground layer provides a buffer for precious topsoil against the erosive effects of frost, heat, wind and water.

**Weeds:** The removal of fallen logs and the organic ground layer disrupts the stability and 'intactness' of the environment, which can mean an open invitation for weeds.

**Firewood collection:** Firewood collection generally involves collecting undecayed fallen logs and branches. If not done sustainably, this repeated loss will, over time, reduce or eliminate the availability of ground storey habitat.

**Fire risk:** Your personal safety is the priority in a fire. It is imperative that your house, sheds and surrounds are free from all flammable material, and you have prepared a fire plan.

### Practical actions



**Look upon fallen logs, branches, sticks and leaves as a valuable resource** – if it is in the 'wrong spot', relocate this material where possible to a safe area on the property. Experiment by semi-submerging larger logs and branches in a suitable dam, as habitat for waterbirds, frogs, turtles, fish, yabbies' and insects.

**Don't stack it, spread it** – relocate large logs around the drip line vicinity of paddock trees. This will improve the health of the tree which provides shade and shelter for stock, by limiting the impact of concentrated stock camping, thereby reducing soil compaction, excess manure and nutrient buildup, soil erosion and changes in soil biology.

**Leave some large logs scattered around the paddock** – this provides habitat for native species,

provides protection for the soil and any newly emerging seedlings (which are the next generation of paddock trees). Logs scattered strategically throughout paddocks also provide safe places for newborn calves and lambs to be 'parked' by their mothers, where they are sheltered from the elements and potentially from predators.

**Do not pile up logs directly beneath trees** – this will only create a harbor for pest animals such as rabbits and foxes, and will become a concentrated source of fuel that will most likely kill the tree in the event of fire.

**Keep fence lines free from flammable material** – again, to reduce the risk of damage during a fire.

**Firewood collection** – Leave hollow logs, these are important homes for native wildlife. Consider planting trees to replace any timber removed.

**Even small sticks provide protection for small grasses and plants** – the ground storey provides protection from frost, wind, the impacts from animals, sun and even heavy raindrops which can easily displace germinating seeds.

**Retaining the ground storey will save you time** – instead of burning up this habitat, spend time doing other jobs around the property!

### Conclusion

We share our properties with a multitude of native mammals, birds, insects, invertebrates, reptiles, frogs and plants that have also called it home for millennia. Just how diverse and interesting this natural element is, is now up to us to determine, through the way we manage the land.

The ground storey is literally 'real estate and supermarkets' for our native fauna. By leaving the ground storey in situ, or by relocating to a more suitable location on the property, where safe and possible, you are allowing for the natural processes on your property to unfold. You are giving a more diverse range of native species the opportunity to survive, feed and breed, and in return they will provide you with all the enjoyment and satisfaction a healthy, functioning and sustainable 'living' property, with its varied layers of habitat, can provide.

\* Mentiplay-Smith, J. (2020). The Ground Storey: Fallen logs, branches, sticks and leaves for wildlife, property and landscape health.

Published by the Goulburn Broken Catchment Management Authority with funding from the Australian Government's National Landcare Program, and the support of the Moira Shire Council and the Broken Boosey Conservation Management Network.

# The Weekend Local

Euroa's gourmet providore stocking produce from the Strathbogies Ranges and surrounds. Relax over a great coffee or tea from Mansfield Coffee Merchant, take away a local bottle of beer, wine or

Sassy Sister berry liqueur made at Merton. Our ever expanding stock reflects the diversity of food produced in our region by passionate and committed people.

Weekdays:

⇒ 10am to 3.30pm  
(Closed Wednesdays)

Weekends:

⇒ 9am to 3.30pm

**Email:**

[dayletheweekendlocal.com.au](mailto:dayletheweekendlocal.com.au)

**Mobile:** 0490 842 383

Anyone interested in playing  
**croquet** in Strathbogies  
socially please ring Dennis  
Taylor on 0429190807



## WATER BORES

Call now for a site inspection and no obligation free quote:

**Ph: (03) 59674432  
or 0418 362 968**

**Email:**

[admin@matthewandsons.com.au](mailto:admin@matthewandsons.com.au)

[www.matthewandsons.com.au](http://www.matthewandsons.com.au)



## Quiz question answer:

Edna Everage, later  
to become Dame  
Edna Everage, also  
dubbed "The Queen  
of Moomba".



NEW DAMS  
CLEAN OUTS  
HOUSE SITES &  
SHEDS & TANKS  
SPRING CLEAN  
OUTS  
CRUSH ROCK

**Bushland Pools & Earthmoving P/L**

1715 Harry's Creek Road, Violet  
Town 3669.  
Phone: 03 5790 8681  
Mob: 0418 597 488  
E-mail:  
[graemesbushlandpools@yahoo.com.au](mailto:graemesbushlandpools@yahoo.com.au)

MOVING EARTH IS THE  
NAME OF THE GAME  
GIVE GRAEME FRIGO A  
CALL - LOCAL FOR 30  
YEARS

## CROYDONDALE CABINETS

**CABINET MAKERS, KITCHENS,  
SHOP FITTINGS  
NEW HOMES, RENOVATIONS, REFACES**

**Ph: 0408 349 072**

Graeme McKenzie, Strathbogies ABN 27 746 178 130

**Email:** [gmc13990@bigpond.net.au](mailto:gmc13990@bigpond.net.au)

## TQ Top Quality plumbing services

Gas fitting

New homes, renovations and extensions

Roofing repairs and renewals

blocked drains and CCTV drain cameras

Environmentally friendly plumbing

Water Catchment, tanks and pumps

Recycled water systems

Specialises in solid fuel heaters and skylight installations

24hr emergency plumbing

**0407 095 179**  
[derekcrosbie@live.com.au](mailto:derekcrosbie@live.com.au)

## DIRTWORKX

### ALL GENERAL EARTHWORKS

- Farm clean ups – fence lines, etc
- Roads, driveways, gravel, etc
- New dams & clean outs
- General earthworks

Bobcat on tracks, Grader, Excavator, Bulldozer, Tip Truck, Float Truck

**AVAILABLE 7 DAYS A WEEK**

**Luke: 0408 036 303**

**Phone: 03 5795 1061**

**Kim: 0429 380 220**

**Fax: 03 5795 1063**

[kippingdirtworx@bigpond.com](mailto:kippingdirtworx@bigpond.com)

34 Garrett Street, Euroa VIC 3666



## Charli & Clover - From Injury to Recovery to Representing Victoria

At just 13, young budding equestrian rider Charli Hill of Strathbogie has many ambitions when it comes to her horses; one of her immediate goals was to be selected to represent Victoria in the Pony Club National Australian Championships, an event that only comes around every two years.

Twelve months ago Charli and her home bred and trained horse Isle Of Jarroe Valley had quite a serious accident whilst out cross country schooling; not only was Charli very lucky to walk away with no major injuries and just a few bumps and bruises that saw her have to have a week off from riding but her horse known as Clover in the stables, was even more lucky to survive breaking her nose clean in half and it puncturing through into her nasal passage. "It was touch and go there for a few days and we didn't know what the outcome would be after her surgery and if she would even make it home let alone be able to be ridden again", says Katie, Charli's mum. "After surgery Clover suffered severe depression for a few days post-surgery, it was like she just wanted to give up."

Thankfully the staff at Goulburn Valley Equine Hospital allowed us to visit and I also had a great friend and one of Charli's sponsors who is a Bowen Therapist go and treat and spend time with her, it was amazing how much she thrived on those visits. This all happened when we were in covid restrictions so that made visits even more difficult. We cannot thank the team at GVEH enough for all that they did and to our own vet Penelope Thomson for holding our hand along the way and for looking after Clover at her place in Mansfield when she was able to leave GVEH; it really was a team effort.

After some 3 months off from work, nearly half of which was spent in a stable trying to keep quiet and the remainder in her paddock, it seems the break didn't affect the season that followed for Charli and Clover. "Clover was rather fresh when she first came back in and for the first few weeks we just concentrated on long walks and seeing how her breathing was after the accident but once we established that she was ok we increased the work load slowly and she was back out and about in no time" says Charli.

After the accident Charli made the very hard decision to retire Clover from eventing as "the risk of re-injuring the nose was just too high" and concentrate on show jumping. It also meant that Charli had to reassess her goals with Clover as her aim of getting her to Melbourne 3 Day International, one of Victoria's most prestigious Eventing events on the calendar, was now no longer a possibility and her focus turned to qualifying for the Pony Club Australia National Championships instead.

These Championships are held all over Australia every 2 years and this year they just happen to be on home turf in Benalla in September. Charli was fortunate enough to also participate as part of the Eventing team in 2019 on her pony in the sub-junior section in Sydney. "This year the qualification process was a lot more rigorous; being held in your own State means that a lot more applicants apply and Charli also had to step up a grade this year competing in the Junior division which is for riders 13 – 17 years of age although some of the applicants would be 18 by the time the event comes round as its their date of birth as of 1<sup>st</sup> January in the year of competition" Katie explains. "For Charli to make this event on Clover after everything they both experienced only 12 months ago is a great achievement for them. Charli has worked very hard to get here and this is just one step in a long list of goals Charli has set herself" says Katie.

Charli will be the baby of the Junior Show Jumping team, a title that doesn't worry Charli as it means that she always has those more experienced than her to ask for help and advice. Charli was selected as one of 5 junior members to represent Victoria and will compete against riders from Western Australia, South Australia, Tasmania, New South Wales and Queensland. Her section will jump in three classes over the week long competition at a height of 115cm. "Clover and I recently competed at the State Titles in Werribee and came 4<sup>th</sup> in the final of the Childs class with fences starting at 110cm and finishing at 115cm or thereabouts; this was our first major title event and was a good introduction to this level of competition, I can't wait to compete and hope that we can do better than a 4<sup>th</sup> at Nationals" Charli said.

*Katie Hill*

# Suck it up

## SEPTIC PUMP OUTS

### 0447 521 981

suckitupsepticpumpouts@gmail.com

- Septic tank pump outs
- Treatment Plant pump outs
- Triple interceptor pump outs
- Portable toilet pump outs

Fast **professional** service

Operating out of Benalla

Servicing all surrounding areas

Call today

**0447 521 981**

## STRATHBOGIE GOLF CLUB

FOR SALE

SPLIT DRY FIREWOOD



Price List 2021

\$100 per cubic metre

Tandem 8x5 \$120

Delivery Charge:

Within 30km - \$30 Outside 30km - \$50

TO ARRANGE CONTACT EITHER:

MICK DIXEY PH: 0429913737 OR

GRANT PEARCE PH: 0448219552

(Cease ad July)

## GRANITE BRIDGE AGRICULTURAL ENTERPRISES



## Rural Contracting Tractor, Fencing & Chainsaw Work

### Tractor Work Using Deutz Fahr 96hp Tractor:

- ◊ Flail Mowing with 2.4m (8ft) cutting width
- ◊ Front End Loader Work - Bucket, Heavy Stick Rake, Pallet Forks
- ◊ Hay Forks with front and rear forks for large bale hay handling
- ◊ Post Hole Digging - 6", 9", 12", 15" or 24" diameter augers
- ◊ Harrowing with 4m (13ft) harrows
- ◊ Grading with 1.8m (6ft) grader blade
- ◊ Light Plowing / Scarification with 3.2m S-Tine Cultivator
- ◊ Pulling, Pushing and Towing - 4wd and 4 wheel diff locks can pull whole trees!



### Fencing, Chainsaw & General Work:

- ◊ New Fence Erections
  - timber or concrete posts, wire or wire/hinge joint fences
- ◊ Fence Repair and Clearing Trees Off Fences
- ◊ Chainsaw Work and other tasks around the farm



**RATES:** Tractor Work: \$55 per hour incl. GST (\$50 + GST)  
All Other Work: \$44 per hour incl. GST (\$40+GST)

- Rates include fuel & oil - transit time charged - fencing materials and other consumables extra -

Call Big Clarky on 0406 074 019 or Julie / Clark on 5790 5226 to discuss!



# Strathbogie Granite Project

## Winter 2021

The Strathbogie Granite Project has been active for over a decade now investigating various facets of the geology from Tallarook to Mt Samaria. Field work in the Strathbogie ranges has been curtailed during 2020 with more focus in remoter areas including forest. The regular public presentations could not go ahead, and the talks in Strathbogie in mid-2019 at the School and Hall seem a long while ago.

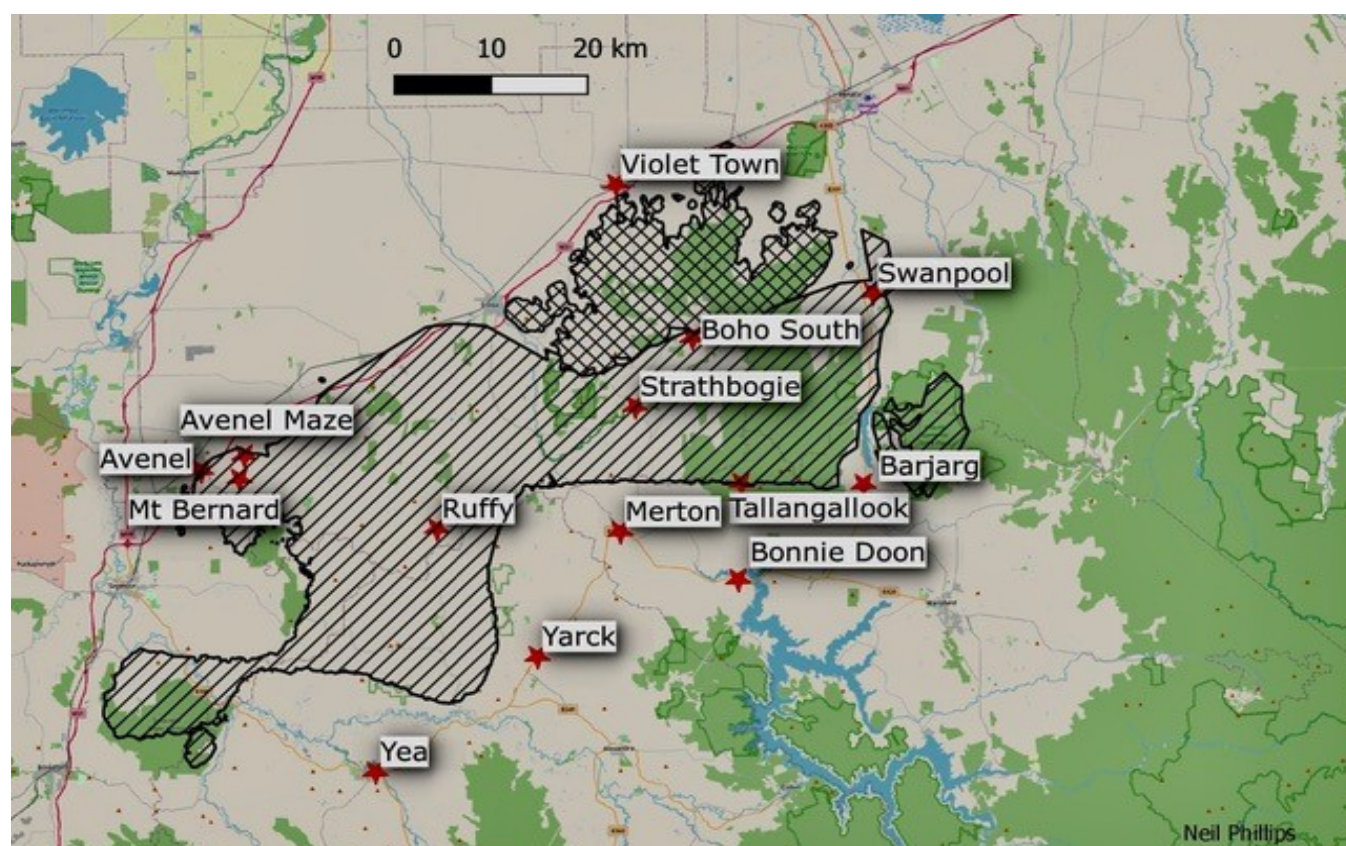
The Project is a collaboration between researchers from University of Melbourne and Professor John Clemens and his team at Stellenbosch University (RSA). The general goals are to provide high quality science outcomes to assist the understanding of our soils, groundwaters, erosion, pastures and native vegetation. Results are fed back to the community through regional talks and field trips, summary papers and scientific publications. Restrictions have meant that the Stellenbosch and Melbourne researchers have not been able to meet in person, but regular morning scientific exchanges have continued throughout the Victorian and South African lockdowns.

Slowly at first the research has recommenced in recent months with field work both on private land and in forests. A normal field day on private property involves prior permission and notification of our intentions, and then visiting numerous outcrops of granite mostly on foot. We usually make recordings in notebooks and occasionally take compass readings and photos.

The plan was for a geology field walk up Mt Bernard near Avenel but that has been postponed three times and will now be rescheduled for September. The high level of interest in this walk suggests we might run it on two Saturdays.

The mailing list for these granite updates now involves 1000 people who have assisted in many ways including giving land access for the research work. For those joining this group more recently we might add that we do not work for, nor consult to, the companies mining around the Strathbogies (e.g. Lima South) nor those exploring in the district (e.g. Currawong Resources) though like everyone else we take an interest in understanding all regional activities that rely on geology.

A big thank you to all those who facilitate this work and share their own knowledge in the paddocks and during the outstanding Riparian Walk series.



Diagonal lines show the Strathbogie granite from Tallarook to Mt Samaria. Crosses highlight the Violet Town Volcanics.

Neil Phillips and John Clemens  
m: 0417 300 400 e: [neil.phillips@bigpond.com](mailto:neil.phillips@bigpond.com)

Strathbogie  Dental  
FAMILY DENTAL CARE

**NOW  
OPEN**

**Dr Thomas  
Hudson**  
**Stacey Putker**  
(Children's Dental)

**(03) 4702 2111**  
**36 Kennedy St Euroa**  
At Euroa Health



## TREE PLANTING ON FARMS AND PROPERTIES



- FOR CLIMATE BENEFITS;
- FOR HABITAT & BIODIVERSITY;
- FOR STOCK HEALTH

DURING EXTREME WEATHER  
**PLAN NOW FOR PLANTING THIS AUTUMN/WINTER**

### **JACK OFFERS:**

- ADVICE ON YOUR PROJECT
- GROUND RIPPING & PREPARATION
- PROVISION OF TREES TO SUIT EACH PROJECT
- PLANTING, MULCHING etc.
- ONGOING MAINTENANCE

**40 YEARS TREEPLANTING EXPERIENCE**  
CONTACT JACK FREWIN m: 0427 847 594

## Milkwood Bread

Kate and Sim are baking bread  
on a Friday again.

For deliveries of warm baked  
sourdough breads direct to your  
mailbox

Call Kate on 0432233558

Or email: [piccaninnykate@gmail.com](mailto:piccaninnykate@gmail.com)

**Strathbogie Ranges**  
**- Nature View –**  
*Stories, activities & more.*  
*Ecology, landscape and*  
*natural history*  
<https://bit.ly/3sh52K1>

## Refuelling Solutions 24/7 Self Service Diesel

Strathbogie Fuel Cell 62 Spring Creek Rd

**For all your On-Farm fuel deliveries and lube supplies please contact**

**Mark Reynolds**

Business Development Executive

Shepparton

**M** 0418 510 028

**E** [mreynolds@rfs.com.au](mailto:mreynolds@rfs.com.au) [www.rfs.com.au](http://www.rfs.com.au)





## The Name Game: Wait! – there's more

To elaborate: there's more to scientific naming than the 'binomial' names (genus, species; such as *Macropus giganteus*) that we've been focussing on. I wonder whether, when at school, you sometimes wrote your name in a book in this style: given name, surname, street number, street, town, state, country, Earth, Solar System, Universe ... just for fun. But as well as being fun, it's a good example of a hierarchy, in which each category is a member of a larger category, starting with one person and their location, and going on with larger and larger locations (categories) until you reach an all-inclusive one.

In like manner, taxonomy (the science of naming) does more than just bestow names on creatures; it also classifies them. And classifying involves placing the species in a hierarchy which becomes more and more inclusive in order to encompass more and more organisms. Its basis is the similarities and differences between organisms, but they in turn stem from what we believe are the organisms' evolutionary relationships. In straightforward terms: the more similar two creatures are, the more recent was their descent from a common ancestor. In smaller, shorter-lived and faster-breeding animals (insects provide good examples) we have been able to actually track the division of one species into two species within a genus as it occurs.



or Swamp Wallaby, *Wallabia bicolor* (from *wolabi*, Aboriginal, small kangaroo; *bicolor*, two-coloured, Latin). It actually isn't black, but dark brown above and rusty yellowish beneath, hence the name.

We think that the Grey and Red Kangaroos are so closely related that we place them in the same genus (*Macropus*). The Black Wallaby is in a different genus, since it is more distantly related:



So who or what is *Macropus giganteus*? *Macropus* from Greek (big foot), *giganteus* from Greek (giant). A very big animal with big feet (big hind-feet, anyway) – none other than the Eastern Grey Kangaroo, an animal familiar to anyone who has ever set foot on the Tableland. Not much of a giant, you might say, compared to an elephant or a giraffe. But it is close to being the biggest Australian

mammal, outdone only by *Macropus rufus*, the Red Kangaroo. The other biggish hopping animal we commonly see is the Black



the common ancestor of *Macropus* and *Wallabia* lived longer ago than the common ancestor of Grey and Red Kangaroos. But the genus *Macropus* and the genus *Wallabia* are united at the next level of the hierarchy, the **Family**, Macropodidae. The wombat, another familiar 'Bogies denizen, is in a different family, Vombatidae; but Macropodidae and Vombatidae are united at the next highest hierarchical level, the **Order**, which belongs, with additional Orders, in the **Subclass** Marsupialia (of course). It, with the Prototheria (platypus, echidna) and Eutheria (placental mammals such as ourselves) go to make up the **Class** Mammalia (all mammals). And it, with lots of other Classes, is a member of the **Kingdom** Animalia (all animals).

What's the point of it all? It gives us a framework in which to organise and study biodiversity and evolution. And note that, as you descend the hierarchy, each step you take tells you more about the organism. Knowing that it's a mammal is vastly more informative than merely knowing that it's an animal; knowing that it's a marsupial more informative again. Unlike marketing or political-speak, it isn't just a great load of mumbo-jumbo.

Angus

## True Story

At the urging of his doctor, Bill moved to Strathbogie for the fresh Tableland air. After settling in, he met one of his neighbours. He was also a mature man. "Say, is this a healthy place?" asked Bill.

"It sure is!" the other man replied. "When I first arrived here I couldn't say one word. I had hardly a hair on my head. I didn't have the strength to walk across a room. I even had to be lifted out of bed". "That's wonderful," said Bill. "How long have you been here?"

"I was born here," came the reply.







**Now open in Strathbogie - Ted Paterson's Mechanical  
Servicing and Repairs.**

**Need a small engine repaired, a mower fixed, a chainsaw sharpened, trailer lights  
reliant, basic car servicing or brake work? With years of previous experience delivering mechanical  
repairs to the Strathbogie community - I'm back and I'm your man!**

**Give me a call or drop me a line. If I can't talk, I'll respond ASAP.**  
(I'm still working in Euroa a couple of days a week).

Mob: 0438 017 361 E: [alexvic64@gmail.com](mailto:alexvic64@gmail.com)



## SOLAR PUMPS FOR AUSTRALIAN FARMERS

- Full DC Solar Pump Packages starting from \$1980
- DC Submersible and Surface Mount Pumps
- Hybrid Solar Pumps - AC/DC
- Lifetime Support from Commodore Australia



**VISIT OUR WEBSITE TO SEE OUR  
COMPLETE RANGE OF SOLAR SOLUTIONS.**



**COMMODORE**  
INDEPENDENT ENERGY SYSTEMS

**COMMODORE  
AUSTRALIA**

**P 1300 669 256**

sales@commodoreaustralia.com.au  
[www.commodoreaustralia.com.au](http://www.commodoreaustralia.com.au)

## SEVENS CREEK WAGYU

### Farmgate Lunch & Store

Visit Sevens Creek Wagyu farm in Strathbogie for a barbeque you won't forget. Bookings are welcome but not essential. Conveniently located 1.3km from Polly McQuinn's swimming hole on Sevens Creek.

You can arrive at the farm any time between 11.00am to 4.00pm. From there you'll be able to pick your own steak, which will be served with vegetables roasted in Wagyu fat and sides.

Prices range from \$40 - \$90 per plate (depending on how fancy the steak is that you choose). We also offer other fare like charcuterie & sharing platters as well as a kids menu. Sevens Creek Wagyu is pooch friendly but they must be on a lead.

Soft drink and water will be available to purchase, but please BYO booze.

We look forward to welcoming you to a Sevens Creek Wagyu Lunch experience.

### Our Farm to Your Plate

Wagyu & Produce is available for purchase at our Farm Store

Book online at [www.sevenscreekwagyu.com.au](http://www.sevenscreekwagyu.com.au)

Open 11am - 4pm Saturday and Sunday

85 Richards Lane Strathbogie

Phone: 0427 765 550



## Sassy Sister Decadent Blueberry Liqueur

A labour of love and passion from Amanda Furlong and Rob Mitchell. We create Sassy Sister at Bilyara Springs, our sustainable farm and craft distillery, nestled in the foothills of Victoria's pristine Strathbogie Ranges. Made using our organically grown berries, and locally sourced Oak aged spirits, Sassy Sister is distilled and bottled on site at Bilyara Springs.

With Sassy Sister we celebrate and honour generations of strong and independent women. The name Sassy Sister is inspired by two sisters from our family, who combine sweet natures with a zesty wit and luscious vintage style. These sassy sisters have matured into beautiful and capable women - just as our own Sassy Sister has matured into a sumptuous and sophisticated liqueur.

*Available across the North East, in Euroa through Strathbogie Local Open Food Network, Weekend Local and Burtons SUPA IGA. She is in both supermarkets in Mansfield and she can be tasted as a cocktail at the Luna Bar in Mansfield where "Sassy Smash" is on their cocktail list.*

Or buy direct from [www.sassysisterliqueur.com.au](http://www.sassysisterliqueur.com.au)



## Healthy Hectares – Land Class Fencing

Figuring out the best way to manage your land can be overwhelming. There are so many different systems, methods and philosophies on how to increase outputs and minimise inputs. Unfortunately there's no one size fits all approach. Every property is different. Every season is different. Every business is different.



### Grazing on undulating land

There are however some aspects of each property that remain relatively consistent with time. It's these aspects that Land Class Fencing uses at its core.

Land Class Fencing allows you to assess your property's unique characteristics and divide it up into areas of similar output and resilience. These areas are converted to paddocks, which can then be managed in the same way as other paddocks of the same class.

Some of the characteristics that can be used to divide your land into classes include:

- Slope

What's the pitch of the area? Is it slightly undulating or extremely steep? Sheep prefer to camp at the top of hills.

- Direction

Is the area North facing, therefore catching more sunlight than a South facing slope?

- Ground cover

How much and what kinds of vegetation are present? This can include trees, weeds and grasses.

Generally, the more ground cover there is, the more the area is resilient to erosion and less prone to flooding.

- Soil type and characteristics

Does the soil have a high carbon content? Is it mostly clay, loam or sand? Does it absorb and retain moisture? Is it compacted from years of stocking?

- Accessibility

Can you access the land with a tractor? Can it be seeded or fertilised?

- Access to water

Is there a consistent source of water for livestock? Does it dry up in summer? If there's no water source in your proposed paddock, you'll need to factor in the cost of adding a dam or trough.

By carefully **observing your land** and thinking about each of these characteristics, you can begin to get a feel for each area. From this, you can start to plan fence lines and create a budget.



An example of land class fencing between hilly and flat country.

The land should be roughly divided up into each area's potential output. For instance, **flat, well drained country** is likely the most productive land, suitable for grazing or cropping. It's less prone to damage from livestock and machinery, and easier to work than steep hills. **Steep hills** require more careful grazing, and may not be easily accessible with machinery.

**Undulating country** will often be quite productive, but

with higher variability than flat country. This is probably not suitable for some types of crops, but it's still ok for grazing.

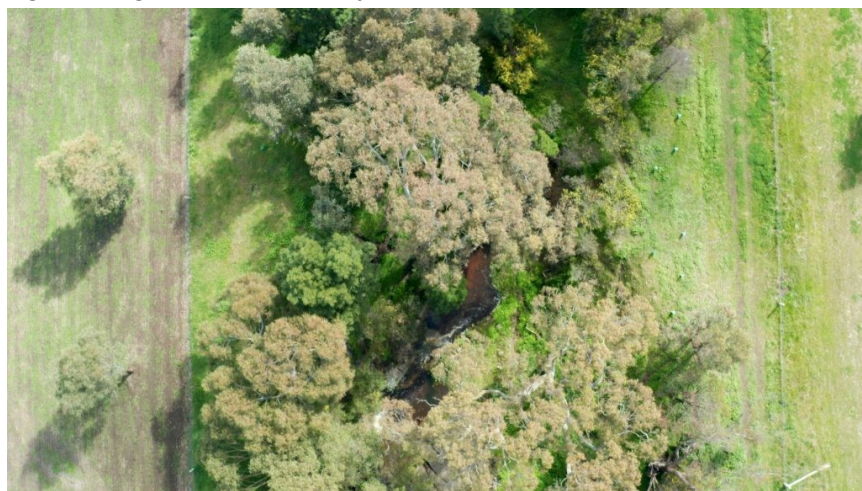
*Continued next page .....*

Continued from previous page .....

It is recommended that you **first use electric fences** for your new paddock boundaries. The reason is that you want to test that your fence lines are going to achieve the desired result before you commit the time and expense to a full, permanent fence. Only when you've proven that your classes are sound and you're seeing the desired result should you commit to new fences. Fences should be installed at the break of slopes (where the angle of the ground begins to change). Putting fences along ridgelines is not advised, as stock will congregate at the ridge.

Fences are only half the battle though. Once the infrastructure is in place it's time to consider the other factors.

**Rotational grazing** is essential to maximising your productivity whilst preserving your land. Grasses don't like to be continually grazed, as it limits their recovery time. The issue with small mobs/herds in large paddocks is that the livestock will preferentially graze certain areas over others. This leads to over and undergrazing within the same paddock. Once you've created smaller paddocks, increasing your mob/herd size is essential for effective management of your grasses. This is because it allows more control of how each paddock is grazed. With careful monitoring, livestock can be moved on to the next paddock when the grass is optimally grazed. Preventing overgrazing has several benefits, including higher long term productivity and less chance of erosion.



Fencing and replanting of a sensitive waterway to prevent erosion.

So to summarise, the general steps of Land Class Fencing are:

Carefully observe your land before making any changes.

Use electric fences first to test your new paddock boundaries.

Once you're happy with the proposed fence locations, plan and install your new fences and water infrastructure if required.

Increase the size of your mobs/herds for more control and efficiency.

Watch your grasses and use rotational grazing to continually move livestock through the farm.

Allow land time to rest and avoid grazing sensitive or vulnerable areas.

If you'd like to find out more about managing your property, the Healthy Hectares guide is packed full of useful advice.

Alistair Tame



## The Bookshelf – notes from the Bohomians Bookclub

*Mrs Kelly: the astonishing life of Ned Kelly's mother* by Grantlee Kieza  
ABC Books, 2018

This is an extensively researched, retelling of the Ned Kelly story, through the lens of his mother's life. Rather than recycling the old myths, Grantlee Kieza makes full use of direct accounts from contemporary newspapers, police reports and a royal commission, letting the actions, encounters and results themselves give the reader a feel for the era.

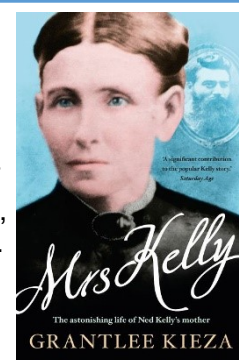
From the Gold Rush of the 1850's to Federation in 1901, the social and economic situation, along with religion, poor police practices and a justice system that favoured the landed gentry (the old "squatocracy") all created an environment where class tensions and discontent would thrive.

The wife of a convict, Ellen, like so many Australian pioneering women, led a life of great hardship. She raised 12 children in little bush shacks, through famine and drought, outliving most of them. She was subject to partners who were either hopeless or cruel, and after many scrapes with the law (often the result of her own fiery nature), was sentenced to 3 years in prison with a newborn baby.

The lives of the other Kelly children, Ned's siblings, are also described in some detail, which adds further context and richness to the story.

Overall, a balanced and unbiased account, able to skirt both sides of the debate of whether the Kelly's were heroes or villains, whether the police were at fault or not and leave you sympathetic to all. There were mistakes and bad choices on both sides; victims of the time and circumstances in which they lived.

Next Month: *All Adults Here*, by Emma Straub, Penguin Random House, 2020





## Landcare- is what we make it

What is Landcare? I've been asked this question quite a few times since taking on the Strathbogie



Boardwalk construction

Tableland Landcare Group President's position last December. I have quickly come to the realisation that Landcare means different things to different people.

To most people, Landcare is a movement which seeks to protect environmental values, whilst helping to change the landscape, through fostering sustainable land management practices on both public and private land.

Since its inception in 1989, Landcare has helped to support communities across Australia implement projects that protect native vegetation and waterways; address land degradation, such as erosion and salinity; tackle weeds and pest animals, and of course plant trees.

Landcare has also played a pivotal role in providing extension advice to farmers, so that agricultural land is managed more holistically to increase productivity, whilst protecting and enhancing environmental values.

Here on the Tableland, Landcare has delivered projects that have helped landowners of all persuasions plant indigenous trees to create wildlife habitat -links/ livestock shelterbelts; fence off waterways and remnant vegetation; treat high priority weeds, and control pest animals such as rabbits.

Over the years, it has also hosted numerous events, giving the community the opportunity to hear guest speakers on a range of topics, including geology, groundwater, fauna, and soil and pasture health.

So, when you think of Landcare, what do you think of?

As a community, we have the opportunity to shape the direction our Landcare takes. From the feedback you have given, you like what we have done in the past, but you'd like a bit more variety. Loads of people have said they want more programs on regenerative agriculture,



Chainsaw certification

others want more tree planting and citizen science projects and even more want a wider range of guest speakers.

In order for us to provide more variety, we need to build our committee's capacity. To do this we need more people to join the committee. If you can't commit to joining the committee, perhaps you'd like to provide assistance with the delivery of a particular program?

The committee are about to start the process of organising our Annual General Meeting, so please stay tuned for further details. Our committee meet on the first Sunday of every month at 9am at the Strathbogie Memorial Hall subject to Covid-19 restrictions.

Natasha Baldyga- President



Weather and soil monitoring station installation



Strathbogie Tableland Landcare Group E: [StrathbogieTablelandLandcare@strathbogie.org](mailto:StrathbogieTablelandLandcare@strathbogie.org) M: 0402 785 965



# We're here for you 5 days a week

<b>Monday:</b>	<b>9:30am - 4:30pm*</b>
<b>Tuesday:</b>	<b>9:00am - 12:00pm</b>
<b>Wednesday:</b>	<b>9:30am - 4:30pm*</b>
<b>Thursday:</b>	<b>9:30am - 4:30pm*</b>
<b>Friday:</b>	<b>9:00am - 12:00pm</b>

(\* Closed for lunch 12:30pm - 1:30pm)

[gmcu.com.au](http://gmcu.com.au)

36 Binney St, Euroa  
5795 1771

**gmcu.**

Goulburn Murray Credit Union Co-operative Limited ABN 87 087 651 509 AFSL/Australian Credit Licence No. 241364. Terms & conditions, fees & charges and eligibility criteria may apply.

## Strathbogie Flavours



**[www.strathflavours.com.au](http://www.strathflavours.com.au)**



# ***Peranbin Primary College Strathbogie Campus***

We are almost at the end of an amazing term! During Bogie Backyard this term the children have spent a lot of time looking at and appreciating fungi. We have walked down to the creek and found it bursting with water and flowing very quickly. We also found lots of different types of fungi.



## **Bioluminescence Fungi Festival!**

The Strathbogie students artwork lit up Binney Street Euroa for the the Bioluminescence Fungi Projection festival. It was an amazing night and students should be very proud. Visiting Mycologist Allison Pouliot was super impressed by both the artwork and the enthusiasm our kids have for the Fungi kingdom.



The Juniors have had a marvellous time learning about location and giving directions. The kids pretended to be robots and controllers, giving and following directions to various locations in the classroom. We had a marvellous time putting our knowledge of directional words to practise in a real life obstacle race in the playground. We discovered clock -wise movement can be tricky when you're running!

In Maths, some students were learning to use BODMAS rules to solve equations while others were learning about types of angles.



The Seniors and Juniors have been working very hard with measuring during Maths. Discussing thick and thin trees and how to measure them, measuring furniture with unifix, and learning about volume and capacity with water.



(thick and thin)



(unifix measuring)



(Wanted posters)

During Literacy we have been reading Fairytales, Myths/Legends and Dreamtime stories. We chose a Fairytale character to make a Wanted For poster. We had to make up crimes that the character had committed. The giant from Jack and the Beanstalk was very popular. We have been revising, editing and publishing our very own Fairytales. Everyone has worked hard on creating their stories and a special shout out to Zach and Nyah for their outstanding efforts.



### Sporting Schools – Hot Shots Tennis at Strathbogie

Hot Shots Tennis at Strathbogie Campus has come to an end. Thanks so much to the Strathbogie Tennis Club, and in particular coach Mark Borthwick, for running 6 weeks of tennis lessons for our students.

## Recipe of the Month

### Golden Syrup Dumplings

As per the Broughton Family, "An old fashioned favourite that is always popular at our house. The kids call them GSDs and love them with hot custard and cream."

Cooking time 20 minutes

- 1 cup self raising flour
- 2 tablespoons of butter
- Milk
- 2 cups of water



- 3 tablespoons of Golden Syrup
- 1 cup of sugar
- 1 tablespoon lemon juice
- 2 tablespoons of butter

Rub the butter into the flour and mix to a stiff dough with milk. Shape into small balls.

Combine water, Golden Syrup, sugar, butter, lemon juice in a large pot and bring to the boil. Drop the dumplings into the boiling syrup and cook with the lid in for 20 minutes.